

# DHUMAT 315 T2 1,1kW F400 (245310182)

## GENERAL DATA



### SMOKE EXTRACTION BACKWARD CASING FAN 400°C/2h

#### MANUFACTURING FEATURES

##### CASING:

- Made of galvanized steel sheet with connection flanges and inspection door.
- Changeable panels.

##### MOTOR SUPPORT:

- Galvanised steel plate, motor with flanges fixed on 2 supports. Removable plate / support / impeller set.

##### IMPELLER:

- Backward centrifugal impeller, made of galvanised steel, dynamically balanced and self-cleaning.
- Direct drive on the motor shaft.

##### MOTOR:

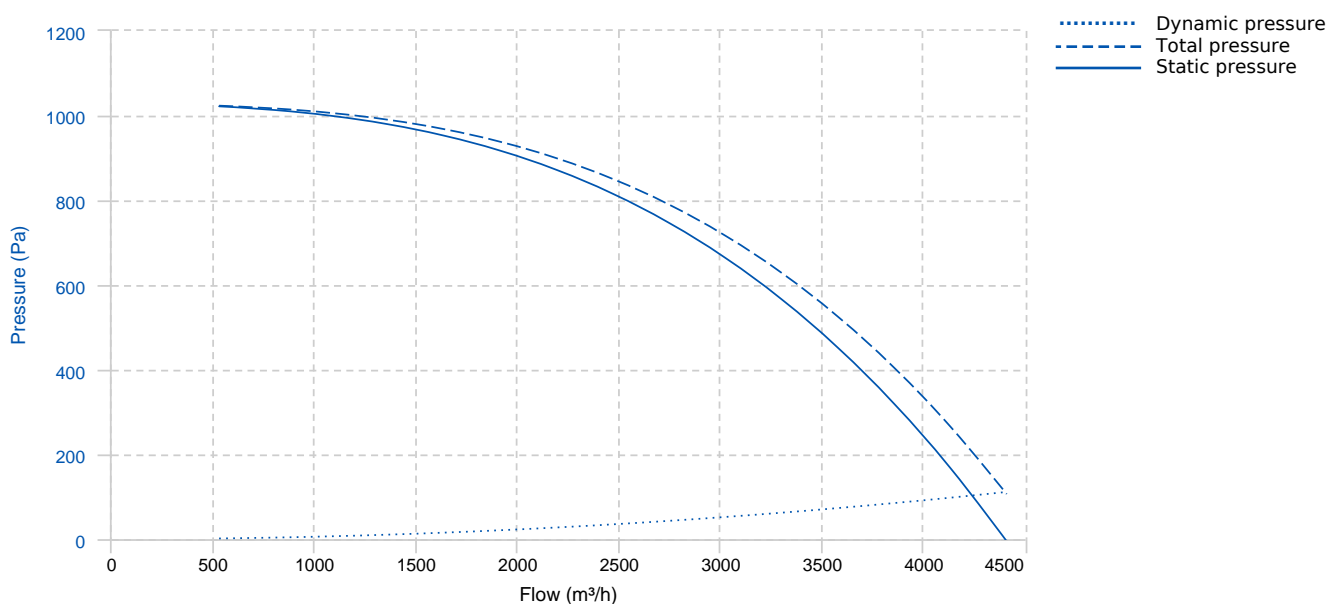
- Three phase motor with IP-55 protection and F class insulation. Manufactured with standard voltages for one speed motors: 230/400V 50Hz up to 4 Kw and 400/690V 50Hz for higher powers of 4 and 6 poles. 2 speed motors: Dahlander. 400V 50Hz

#### APPLICATIONS

- Smoke extraction in tertiary buildings IGH and ERP.
- Ventilation and smoke exhaust in covered car parks.
- Ventilation in technical, industrial or commercial facilities, kitchens.
- Maximum continuous working temperature: carried air 110°C, environment 60°C.

Official homologation by the European laboratory APPLUS according to EN 12101-3:2015 Certification Nr: 0370-CPR-2681

## PERFORMANCE CURVE

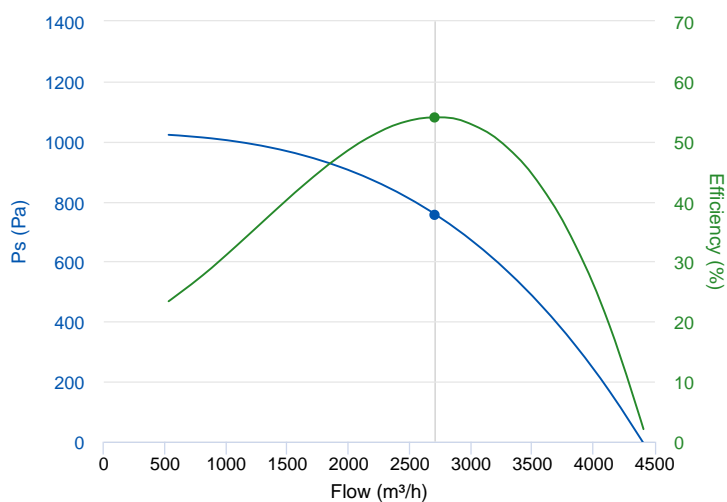


## TECHNICAL DATA

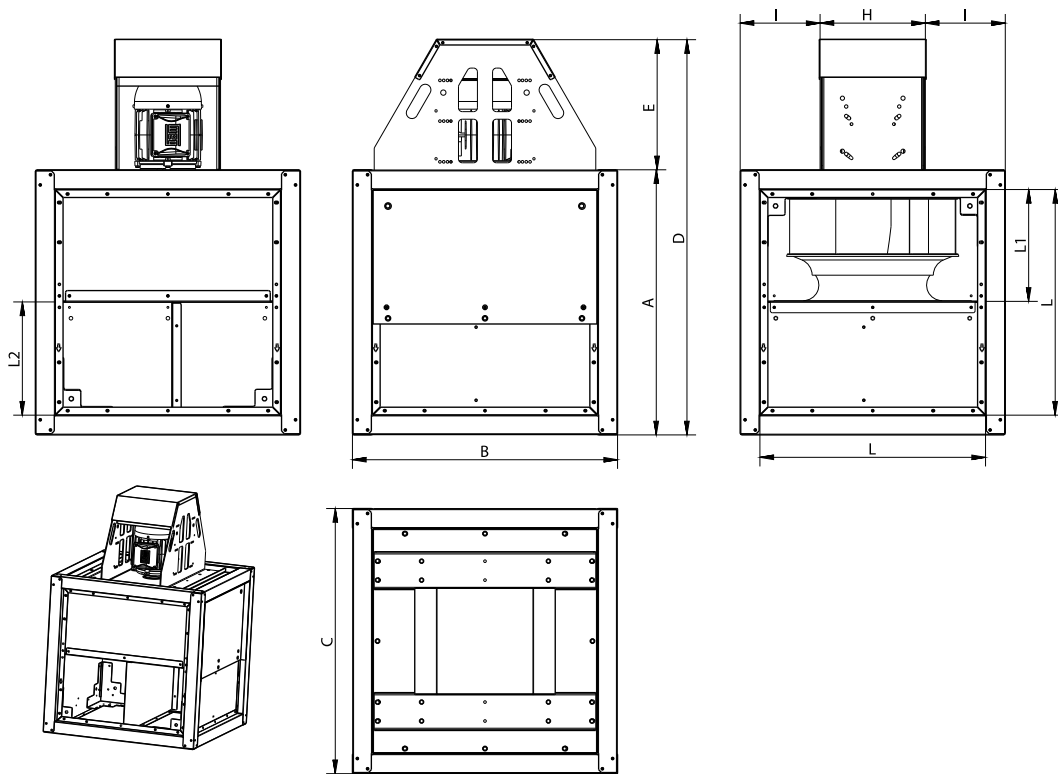
Fan							
RPM	2800	Approx. weight	64 kg	Max. Flow	4410 m <sup>3</sup> /h		
Motor							
Power	1,1 kW	RPM	2800	I max. (230V)	4,05 A	I max. (400V)	2,33 A
Size	80	Approx. weight	16 kg	Efficiency (%)	82.7 %	FP	0.85

## ERP DATA

Fan data sheet		
Fan type	Unit for non-residential ventilation (LOT 6)	
Typology	Unidirectional	
reports.other	None	
Type of driver	None	
Motor power (kW)	1.1	
	Fan values	ERP Requirements 2018
Max. efficiency (%)	54.02	42.62
Effic. Heat recovery (%)	-	
Pabs (kW)	1.105	
Flow (m <sup>3</sup> /h)	2708.64	
Static pressure (Pa)	756.62	
Speed (m/s)	8.38	
SFP (W/m <sup>3</sup> /s)	1468.55	



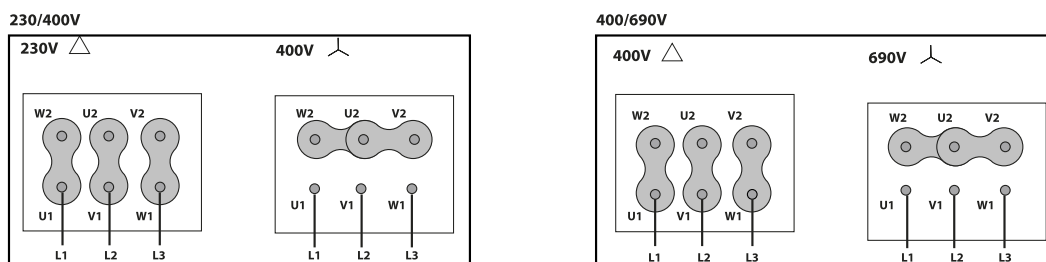
## DIMENSIONS



### Dimensions (mm)

A	600	B	600	C	600	D	912	E	312
H	278	I	161	K	26	L	495,7	L1	181,1
L2	313,1								

## WIRING DIAGRAM



## ACCESSORIES



**SAFETY SWITCH**  
**INT 25 3P A**  
REF: INT253PA



**SAFETY SWITCH FOR 400°C/2h**  
**INT 400 25A 3P**  
REF: 508902501



**OUTLET FLANGE FOR DHUMAT**  
**EI DHUMAT 315**  
REF: 965310111



**DHUMAT FEET KIT**  
**DKF 315-355**  
REF: 245319201



**OUTDOOR FLANGE WITH BIRD GUARD FOR**  
**DHUMAT**  
**VIS DHUMAT 315-355**  
REF: 965310001



**FREQUENCY SPEED CONTROLLER**  
**SFC 230 I 4,2A \***  
REF: SFC230I004



**FREQUENCY SPEED CONTROLLER**  
**SFC 400 III 3,6A \***  
REF: SFC400III4

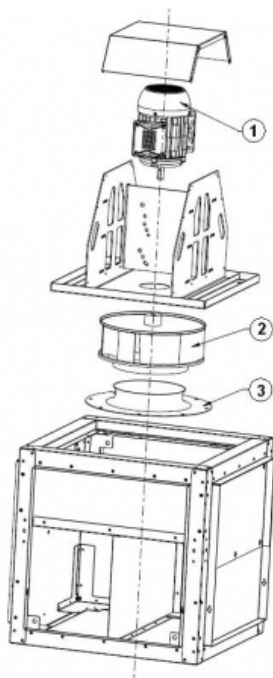


**ANTI-VIBRATION RUBBER BLOCK**  
**AVR (GENERIC)**



**ANTI-VIBRATION SPRING BLOCK**  
**AVS (GENERIC)**

## SPARE PARTS



	Code	Model	Qty
1	721001043	MOTOR 1,1kW T2 B3 230/400V	x1
2	R-CTB-N311-19LG	IMPELLER NIMUS 315-1 D19 LG	x1



	Code	Model	Qty
3	R-279311680	INLET CONE ED11 315	x1